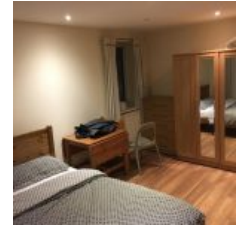
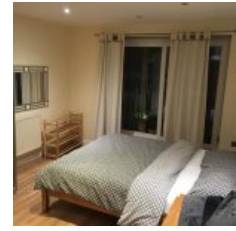


15 Newport Avenue, London, E14 2DQ - £500,000



Three-bedroom two bathroom apartment is available for sale in East India, E14 London.
 Lease approximately 975 years left
 Ground rent is approximately £300.00 per annum
 The service charge is approximately £5,200 per annum

Overview

- 3 Bed
- Bath

Energy Efficiency Rating			
Score	Energy rating	Current	Potential
92+	A		
81-91	B		
69-80	C	80 C	82 B
55-68	D		
39-54	E		
21-38	F		
1-20	G		