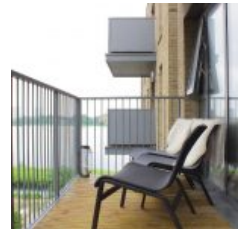
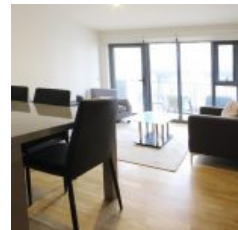


2 Green Lanes Walk, Finsbury Park, London, N4 2GE - £765,000



Overview

- 3 Bed
- Bath

DPR proudly presents this luxury 3 bedroom property comprising a bright living room/diner with open plan kitchen, a range of built in appliances, master bedroom with ensuite bathroom as displayed in the photos.

Location

Situated on Green Lanes the property offers convenient transport options being only 5 minutes walk away from Manor House tube station.

Offering a peaceful, scenic retreat from the city Finsbury park is only 11 minutes walk away.

Also within walking distance is Woodberry wetlands Regenerated urban wetland conservation area on 27 acres with boardwalks, a café & rich birdlife.

There is also a wealth of local amenities on your doorstep including coffee shops, delicatessens.

Leasehold: 245 Years Approx.

Service Charge: £2,451 Per Year Approx.

Ground Rent: £400 Per Year Approx.

Energy Efficiency Rating			
Score	Energy rating	Current	Potential
92+	A		
81-91	B	88 B	88 B
69-80	C		
55-68	D		
39-54	E		
21-38	F		
1-20	G		