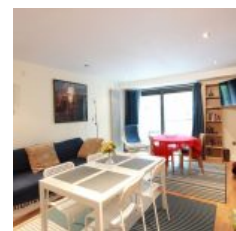
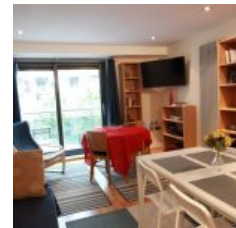
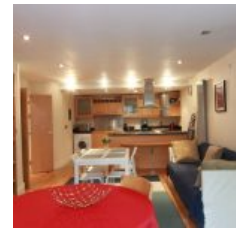


41 Millharbour, E14 9NE - £1,950 pcm / £450 pw



Docklands Prestige Residential are delighted to present a stunning two bedroom two bathroom apartment in the heart of South Quay, E14. The apartment is located on the first floor of the highly sought after 41 Millharbour development and benefits from a private balcony. The property is offered on a unfurnished basis and is available from late August 2019.

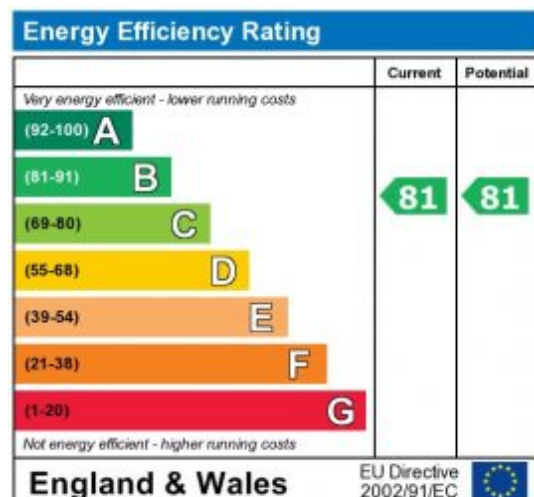
The apartment further benefits from:

- * Two spacious bedrooms - built in wardrobe in master
- * Fully equipped kitchen with integrated appliances
- * Large bright reception with space for dining
- * Fitted family bathroom; en suite to master
- * Ample storage
- * Floor to ceiling windows

41 Millharbour is a popular and highly sought after dockside development offering on-site Concierge and winter garden for it's residents. The development is located conveniently near to South Quay Station and a short walk from Canary Wharf. These apartments are rare to the market so act fast today!

Overview

- 2 Bed
- 2 Bath



The energy efficiency rating is a measure of the overall efficiency of a home. The higher the rating the more energy efficient the home is and the lower the fuel bills will be.