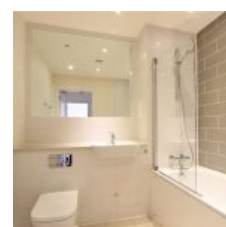
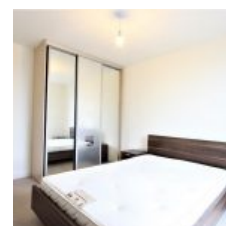
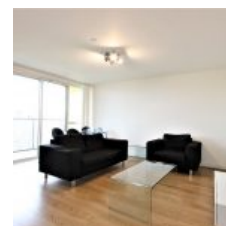


Panoramic Tower, 6 Hay Currie Street, London, E14

6GF - £1,300 pcm / £300 pw



Overview

- 1 Bed
- Bath

Docklands Prestige Residential proudly present a stunning one bedroom apartment located on the 6th floor of this popular development - The Panoramic. The apartment boasts approximately 517 sq ft of living space and offers an east facing balcony with views of the City. The property benefits from floor to ceiling windows, open plan living and fitted modern kitchen.

The development is a striking 20 storey tower offering high quality finishing's, private residents communal lounge, rooftop terrace on the 20th floor, concierge service, CCTV security cameras, video entry-phone system and residents gymnasium.

Location

The apartment is ideally situated just a two minute walk from Langdon Park and All Saints DLR stations with links to Canary Wharf, Bank, Stratford City and London City Airport. The surrounding area also hosts supermarkets, parks, pubs, gyms and so on. So, you really don't have to stray very far to get all you need.

Energy Efficiency Rating			
Score	Energy rating	Current	Potential
92+	A		
81-91	B		
69-80	C	78 C	78 C
55-68	D		
39-54	E		
21-38	F		
1-20	G		