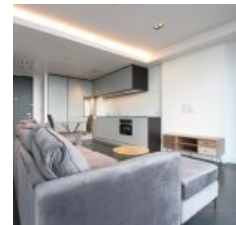
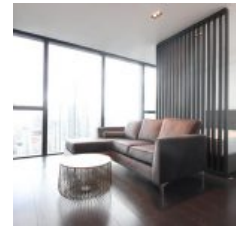
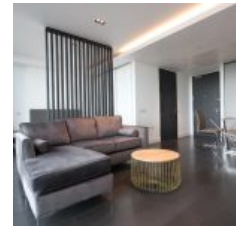


Amory Tower, 203 Marsh Wall, Canary Wharf, London, E14 9TW - £2,102 pcm / £485 pw



Amory Tower's striking form is designed by Make Architects to sit in harmony with its surroundings. Inspired by Canary Wharf's riverside location, the moiré effect of the fins on the building's façade move gently over the course of the day, echoing the rippling waters of the River Thames.

Location

Lounge

The Highline Club on the 16th floor includes a beautifully appointed lounge, a fully-equipped gym, and a meeting area and screening room. The perfect place to socialise, do business or simply sit back and relax on the terrace while you take in the far-reaching views over Canary Wharf, the River Thames, the City of London and beyond.

Pool

The private spa on the Lower Ground Floor features a beautiful 12-metre heated pool, steam room, sauna, rain shower and his and hers changing rooms, offering the perfect indulgent retreat.

Private lounge and terrace

Strategically positioned to make the most of stunning sunsets and panoramic views of Canary Wharf, the 16th floor private lounge features an open kitchen, relaxed seating and three terraces looking out over the London skyline; the ideal space for gatherings and events all year round.

Screening room

Comfortable seating, a mood of quiet concentration and a respectful sense of privacy are the hallmarks of Amory Tower's meeting area and cinema space, with everything you need to turn work into a real pleasure.

Gym

Let the breathtaking views over Canary Wharf and the River Thames inspire you as you enjoy a workout with a difference at the spacious, fully equipped gym.

Overview

- 0 Bed
- Bath

Energy Efficiency Rating

Score	Energy rating	Current	Potential
92+	A		
81-91	B	83 B	83 B
69-80	C		
55-68	D		
39-54	E		
21-38	F		
1-20	G		