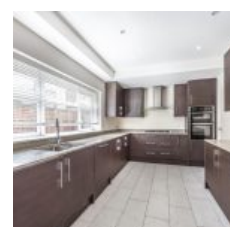
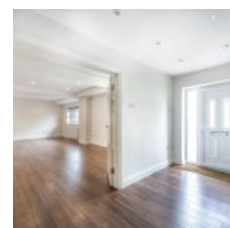


Belsize Road, London, NW6 4RY - £5,417 pcm / £1,250 pw



Overview

- 4 Bed
- Bath

Exceptional four bedroom house with roof terrace, in the heart of South Hampstead. This beautifully presented property is set over four floors and is perfect for a family or sharers, who require a central location with excellent transport links nearby. Comprising of four decent sized double bedrooms, three of which have en-suite bathrooms, a further well appointed shower room on the ground floor. The reception is spacious and bright, whilst the kitchen is separate and is fully equipped with modern appliances. The property has plenty of added storage space, as well as a large roof terrace and generous private garden.

Location

Situated perfectly within walking distance of Swiss Cottage station (Jubilee Line) and St Johns Wood Station (Jubilee Line) whilst South Hampstead station offer quick transport into Euston station. There is a wide choice of local shops, restaurants and Cafes nearby. Available now, furnished or unfurnished.

Energy Efficiency Rating			
Score	Energy rating	Current	Potential
92+	A		
81-91	B	82 B	82 B
69-80	C		
55-68	D		
39-54	E		
21-38	F		
1-20	G		