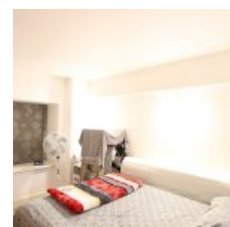
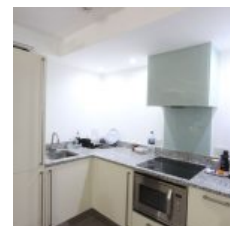
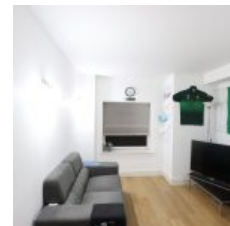


# Building 22 Cadogan Road, Royal Arsenal, London, SE18 6YL - £1,200 pcm / £277 pw



## Overview

- 1 Bed
- 1 Bath

Docklands Prestige Residential are delighted to present a modern One Bedroom Apartment in Building 22 part of the Royal Arsenal waterside development. This property benefits from a concierge service and is offered on a fully furnished basis.

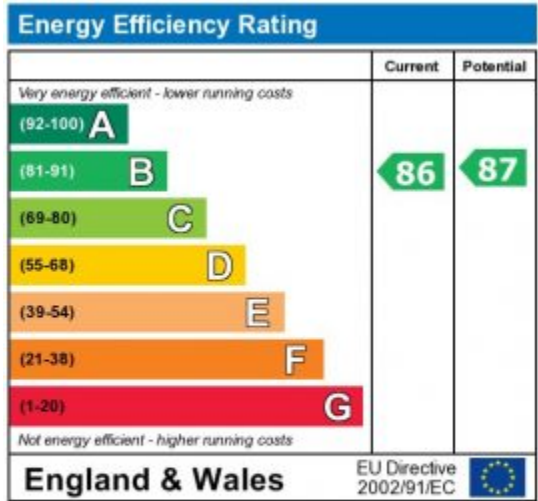
The apartment further benefits from:

- \* One double bedroom
- \* Open plan kitchen with integrated appliances
- \* Large reception with space for dining
- \* Fully fitted family bathroom
- \* Concierge service
- \* Residents only onsite gym

The flat itself is just minutes away from the Elizabeth Line (Crossrail Station) projected in 2020. 10 mins to Canary Wharf, 15 to Liverpool St and 45 to Heathrow.

A beautiful, gated, peaceful development dating from 1761 set in wide-open spaces by the river. This former munitions manufacture and military warehousing site has been beautifully landscaped and transformed into a vibrant, living village. With a residents' gym, 24 hour concierge, night security, medical Centre & pharmacy and dentist.

The development also has Tesco Express, Boulangerie Jade, Marks & Spencer's, Sainsbury's, The Taproom (bar and pizzeria), The Dial Arch gastro pub, The Guard House (restaurant and pub), Con Gusto (Italian restaurant) park, Farmer's market, several Gyms, Yoga studio, Nursery and river walks. Onsite Premier Inn and Beefeater restaurant for visiting guests. Friendly and peaceful, a real sense of community has built up here.



The energy efficiency rating is a measure of the overall efficiency of a home. The higher the rating the more energy efficient the home is and the lower the fuel bills will be.