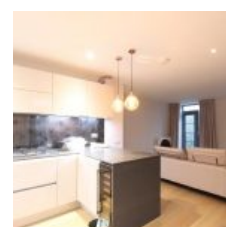
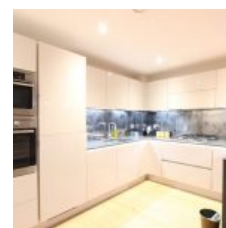
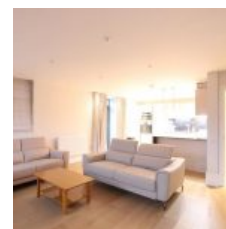


# Crown Drive, Farnham Royal, Slough, SL2 3EE - £1,650 pcm / £381 pw



DPR proudly presents a one-of-a-kind property based at Crown House Estate - Approx 91 sqm of living space. Large 2 Bedroom, 2 Bathroom apartment in an exclusive gated development. Grounds of several acres. Large Living room/dining area/luxury kitchen, 2 Double bedrooms. 2 bathrooms (master with en-suite bathroom). Parking. Quality fittings throughout. Absolute luxury.

## Location

The property is situated in a semi-rural district known as Farnham Park and lies within the Farnham Royal area. The area benefits from numerous golf courses and Whitespark Wood and Burnham Beeches Golf Course are within close proximity. Transport links are provided by Burnham (Bucks) rail station and the M40, M4 & M25 motorways are all within easy reach.

## Overview

- 2 Bed
- Bath

## Energy Efficiency Rating

Score	Energy rating	Current	Potential
92+	A		
81-91	B		
69-80	C	75   C	75   C
55-68	D		
39-54	E		
21-38	F		
1-20	G		