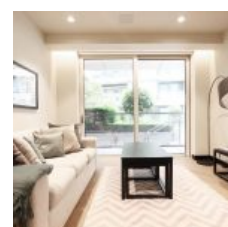
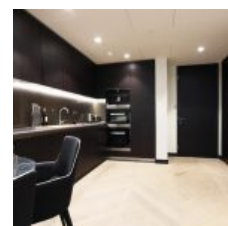
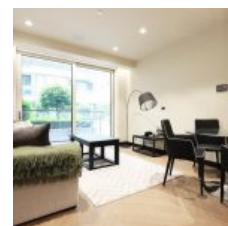


Earl's Way, Tower Bridge, London, SE1 2QR - £1,950 pcm / £450 pw



Overview

- 1 Bed
- Bath

Situated within the renowned One Tower Bridge Riverside development this opulent apartment benefits from a high standard finish with a sophisticated interior design and is offered on a furnished and managed basis.

Featuring the latest in-home automation technology with electronic blinds, climate control and a touch screen central control panel the apartment comprises large reception area with floor-to-ceiling windows. An open plan fitted kitchen with fully integrated appliances. The master bedroom features fully fitted wardrobes with integrated drawers and shelving.

Location

Residents at One Tower Bridge enjoy exceptional resident amenities inclusive of dedicated concierge, state-of-the art gym, pool and spa, business lounge and virtual golfing range.

Located on the Southbank of the Thames adjacent to The City. The property sits within a short walk of London Bridge station (Northern, Jubilee lines and mainline rail network) and within walking distance of The City.

Energy Efficiency Rating			
Score	Energy rating	Current	Potential
92+	A		
81-91	B	87 B	87 B
69-80	C		
55-68	D		
39-54	E		
21-38	F		
1-20	G		