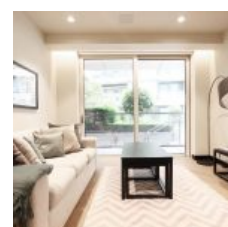
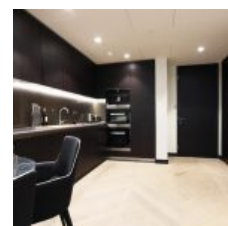
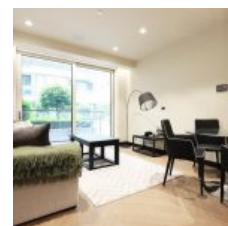


# Earl's Way, Tower Bridge, London, SE1 2QR - £2,080 pcm / £480 pw



Situated within the renowned One Tower Bridge Riverside development this opulent apartment benefits from a high standard finish with a sophisticated interior design and is offered on a furnished and managed basis.

Featuring the latest in-home automation technology with electronic blinds, climate control and a touch screen central control panel the apartment comprises large reception area with floor-to-ceiling windows. An open plan fitted kitchen with fully integrated appliances. The master bedroom features fully fitted wardrobes with integrated drawers and shelving.

## Location

Residents at One Tower Bridge enjoy exceptional resident amenities inclusive of dedicated concierge, state-of-the art gym, pool and spa, business lounge and virtual golfing range.

Located on the Southbank of the Thames adjacent to The City. The property sits within a short walk of London Bridge station (Northern, Jubilee lines and mainline rail network) and within walking distance of The City.

## Overview

- 1 Bed
- Bath

Energy Efficiency Rating			
Score	Energy rating	Current	Potential
92+	A		
81-91	B	87   B	87   B
69-80	C		
55-68	D		
39-54	E		
21-38	F		
1-20	G		