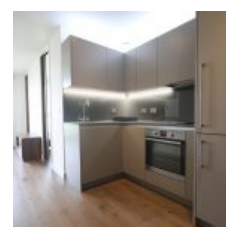
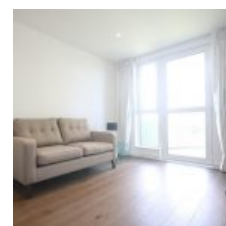
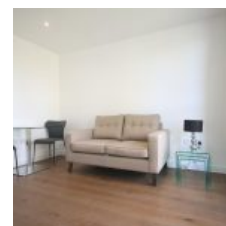


# Grayston House, 1 Ottley Drive, Kidbrooke, London, SE3

## 9FP - £1,550 pcm / £358 pw



This well-positioned modern apartment with a separate large round balcony with green views in the Kidbrooke Village development.

The property comprises a large open-plan living area with a modern integrated kitchen boasting high-spec appliances. The living/dining area is bright and spacious. Just a short walk to Kidbrooke Station.

### Location

The development located in Kidbrooke Village can be found in the Royal Borough of Greenwich, a culturally rich area of London, alive with world-famous attractions, fantastic bars, restaurants, and riverside pubs, nestled alongside an eclectic mix of independent boutiques, quirky shops, and popular crafts and antiques markets. 15 minutes direct train to London Bridge.

### Overview

- 1 Bed
- Bath

Energy Efficiency Rating			
Score	Energy rating	Current	Potential
92+	A		
81-91	B	85   B	85   B
69-80	C		
55-68	D		
39-54	E		
21-38	F		
1-20	G		