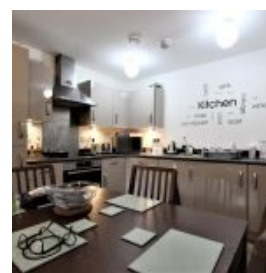
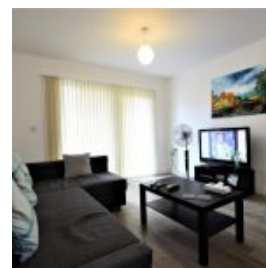
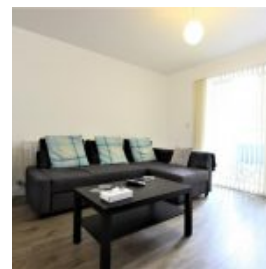


Image Court, Maxwell Road, Romford, RM7 0FL - £1,500 pcm / £346 pw



Overview

- 1 Bed
- Bath

Docklands Prestige Residential presents an exquisite one-bedroom apartment in Image Court Reflections, RM7. This property is available on a furnished basis and boasts the following amenities: a generously-sized bedroom, a chic kitchen, an expansive open-plan living area, a sizable private patio, a family bathroom, and its convenient proximity to local amenities.

Location

The residence enjoys an exceptional location, just a short distance from Romford Brewery. This bustling shopping and entertainment hub lies at the core of Romford, featuring numerous cafes, restaurants, stores, a 16-screen Vue Cinema, and a cutting-edge Virgin Active Gym. The Brewery is a lively and enjoyable destination suitable for individuals of all ages, easily reachable by both private vehicles and various forms of public transportation.

Energy Efficiency Rating			
Score	Energy rating	Current	Potential
92+	A		
81-91	B	84 B	84 B
69-80	C		
55-68	D		
39-54	E		
21-38	F		
1-20	G		