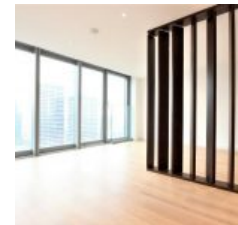
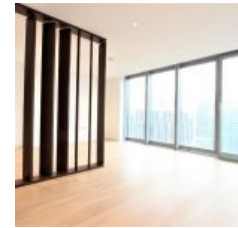


# Landmark Pinnacle, 10 Marsh Wall, London, E14 9GU - £1,500 pcm / £346 pw



## Overview

- 0 Bed
- Bath

A stylish studio-apartment with views towards Canary Wharf and South Dock in the sought after Landmark Pinnacle development. The apartment comprises an open-plan kitchen living area, with built in storage and modern bathroom. Finished to a superb standard throughout. The feel throughout is simple and sleek, with high-quality furnishings and fittings that complement, without detracting from, the spellbinding views across the water and landscape. As well as a private cinema, State-of-the-art amenities include a stunning 56th floor first class gym with a separate exercise studio and Pilates area. The 27th floor offers a magical children's play area together with a more formal garden lounge for adults, lounge and library whilst the 75th floor is crowned by two roof terraces offering panoramic views across London. No Parking, Available Unfurnished.

### Location

At 75 floors, Landmark Pinnacle is London's tallest residential towers with views that extend out across London's unmistakable monuments and waterways.

Located at the western edge of Canary Wharf, excellent transport connections are available via Heron Quays DLR 0.3 mile, Canary Wharf London Underground 0.5 mile as well as the regular Thames Clippers river service 0.3 mile.

\*CGI's used for illustrative purposes

Energy Efficiency Rating			
Score	Energy rating	Current	Potential
92+	A		
81-91	B	84   B	84   B
69-80	C		
55-68	D		
39-54	E		
21-38	F		
1-20	G		