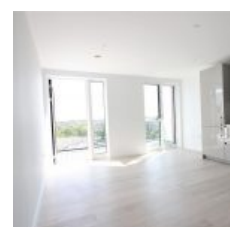
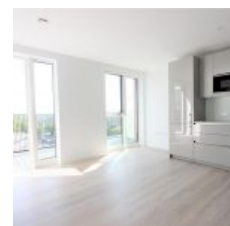


Levy Building, 37 Heygate Street, Elephant & Castle, London, SE17 1FU - £560,000



A Luxury One Bedroom Apartment within the impressive Elephant Park Development. This property includes a spacious Living Room and Dining Room, Fitted Kitchen with Integrated Appliances, Full Length windows, Stylish Bathroom Suite and a Private Balcony. Residents also have access to a 24 hour Concierge Service, Residents' Lounge and a Communal Roof Terrace.

Location

The Elephant Park Development is well situated in a prime central location within reach of numerous amenities including, bars, restaurants, cafés and the Elephant and Castle Shopping Centre.

The development is located near Elephant and Castle station, providing Underground and rail links for commutes across the Capital. Numerous Bus routes service the area providing direct access to most areas within Zones 1-3.

Ground rent is approximately £400 per annum

The service charge is approximately £2,625 per annum

Lease 250 years

Overview

- 1 Bed
- Bath

Energy Efficiency Rating			
Score	Energy rating	Current	Potential
92+	A		
81-91	B	90 B	90 B
69-80	C		
55-68	D		
39-54	E		
21-38	F		
1-20	G		