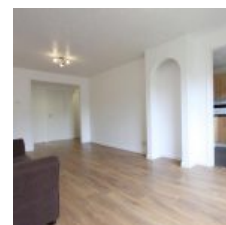
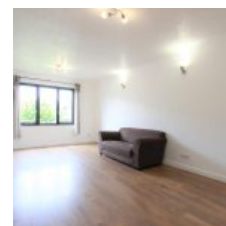


# Maldon Close, London, E15 1PR - £1,700 pcm / £392 pw



This two-bedroom apartment, situated on the first floor of Maldon Close, boasts recent refurbishments to a sleek, modern standard. Partially furnished, it offers convenience and style. Additionally, the property includes the perk of a designated parking space, ensuring ease and accessibility for residents.

## Location

Nestled within the tranquil surroundings of East London, Maldon Close offers a serene residential setting. Conveniently located nearby are Maryland Tube Station, providing easy access to transportation, as well as the bustling hubs of Stratford International and Westfields Shopping Centre, ensuring residents have all amenities within reach.

## Overview

- ✘ 2 Bed
- ✘ Bath

Energy Efficiency Rating			
Score	Energy rating	Current	Potential
92+	A		
81-91	B		
69-80	C	72   C	79   C
55-68	D		
39-54	E		
21-38	F		
1-20	G		