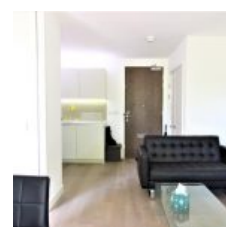
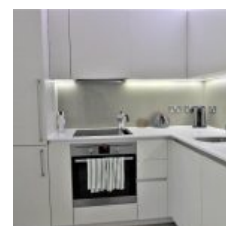
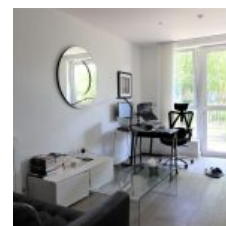


Maltby House 2, Ottley Drive, London, SE3 9FJ - £1,200 pcm / £277 pw



Overview

- 1 Bed
- Bath

Docklands Prestige Residential present a One Bedroom, One Bathroom, Fully Furnished and Modern Manhattan Suite in a fabulous development; Kidbrooke Village, SE3 available now for rent. Situated on the Ground Floor with Patio area.

The suite boasts a fully fitted modern kitchen with appliances, a bright open-plan reception room with space for dining and direct access onto a large balcony.

Location

This well-proportioned apartment is ideally suited to professionals with a brand new modern feel and excellent transport links into Canary Wharf, London Bridge and Victoria.

Residents also benefit from access to 24 Hour Concierge, Residents' Gym, Swimming Pool and well-maintained Communal Gardens.

Energy Efficiency Rating			
Score	Energy rating	Current	Potential
92+	A		
81-91	B	83 B	83 B
69-80	C		
55-68	D		
39-54	E		
21-38	F		
1-20	G		