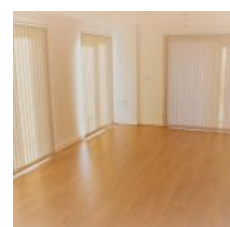
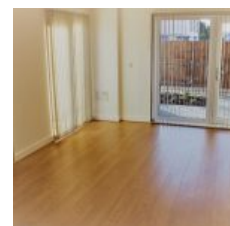


Maxwell Road, Romford, RM7 0FH - £1,280 pcm / £295 pw



Overview

- 2 Bed
- Bath

DPR presents a stylish, modern and highly affordable One Bedroom apartment for rent in Arc Court Reflections, RM7. The property is offered on an unfurnished basis.

There is plenty to love about this property: a large living and dining area with floor to ceiling windows flooding the apartment with natural light. A generously sized master bedroom with en-suite bathroom and a large second bedroom. Modern kitchen complete with a range of integrated appliances. With an outside patio and allocated parking space viewings are highly encouraged.

Location

The property is fantastically located and a stone's throw from Romford Brewery; The shopping and leisure centre sits at the heart of Romford and is home to many cafes, restaurants, shops, a 16 screen Vue Cinema and even a state of the art Virgin Active Gym. The Brewery is a fun and vibrant place for all ages and easily accessible by car and all forms of public transport.

Energy Efficiency Rating			
Score	Energy rating	Current	Potential
92+	A		
81-91	B	82 B	82 B
69-80	C		
55-68	D		
39-54	E		
21-38	F		
1-20	G		