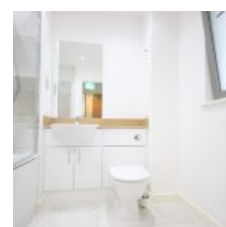
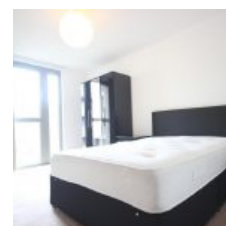
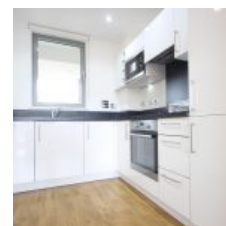


# Meadow Court, 14 Booth Road, London, E16 2FW - £1,280 pcm / £295 pw



## Overview

- 1 Bed
- Bath

Docklands Prestige Residential are delighted to offer this beautiful One Bedroom, One Bathroom fully furnished Apartment. The property is located within a modern development named Waterside Park. Excellently located next to Pontoon Dock DLR station and access to Thames Barrier Park. No allocated off-street parking.

### Location

This development offers a great standard of living for its residents and has local amenities including: Convenience local store, Coffee/ breakfast/ lunch restaurant, Dry cleaners, Day-care/Nursery.

The area benefits from landscaped open space and private residents' gated courtyards. It is located next to the award-winning Thames Barrier Park and River Thames.

Excellent transport links for easy access to London City Airport and the shops. Pontoon Dock is situated just minutes from some of East London's key leisure, retail, commercial and travel destinations including Canary Wharf, The O2, Westfields Stratford, The City and London City Airport.

The area will soon be connected to the new London Cross rail network.

Energy Efficiency Rating			
Score	Energy rating	Current	Potential
92+	A		
81-91	B	81   B	81   B
69-80	C		
55-68	D		
39-54	E		
21-38	F		
1-20	G		