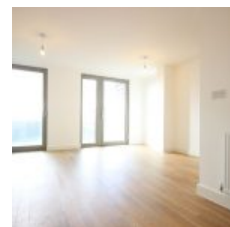
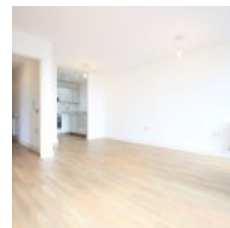
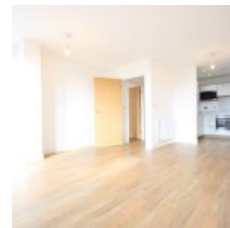


Meadow Court, Booth Road, London, E16 2FW - £1,550 pcm / £358 pw



Docklands Prestige Residential are delighted to offer this beautiful Two Bedroom, Two Bathroom Apartment built in 2014 in a modern development; Waterside Park. Excellently located next to Pontoon Dock DLR station and access to Thames Barrier Park.

This apartment benefits from:

- * Two double bedrooms; master with ensuite bathroom
- * Open plan kitchen with fully integrated appliances
- * Fully fitted family bathroom
- * Balcony
- * Gym
- * Concierge
- * Floor-to-ceiling windows

This development offers a great standard of living for its residents and has local amenities including:

- * Convenience local store
- * Coffee/ breakfast/ lunch restaurant
- * Dry cleaners
- * Daycare/Nursery

The area benefits from landscaped open space and private residents' gated courtyards. It is located next to the award-winning Thames Barrier Park and River Thames.

Excellent transport links for easy access to London City Airport and the shops. Pontoon Dock is situated just minutes from some of East London's key leisure, retail, commercial and travel destinations including Canary Wharf, The O2, Westfields Stratford, The City and London City Airport.

The area will soon be connected to the new London Cross rail network.

Overview

- 2 Bed
- 2 Bath