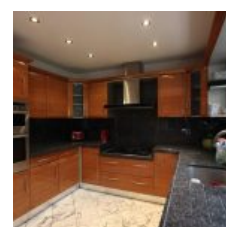
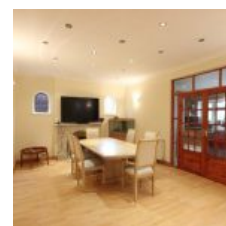
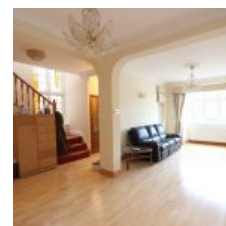


Monkfrith Way, Southgate, London, N14 5NA - £2,850 pcm / £658 pw



Overview

- 4 Bed
- Bath

Docklands Prestige Residential are delighted to present a Four Bedroom Semi-Detached House in Southgate, N14.

This spacious semi-detached residence benefits from 4 bedrooms, 2 reception rooms, 2 bathrooms and a large rear garden. The property is offered unfurnished.

Location

The property is well located in a quiet residential turning, a convenient short walk from Southgate Underground Station and local shopping facilities.

