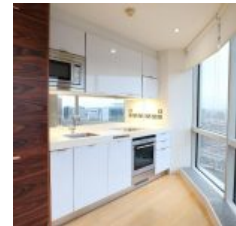
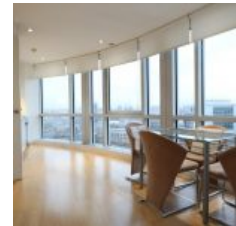


# Ontario Tower, 4 Fairmont Avenue, London, E14 9JB - £1,350 pcm / £312 pw



Docklands Prestige Residential are delighted to offer a stunning One Bedroom Apartment in Ontario Tower, an award-winning riverside development just a stone's throw from the centre of Canary Wharf with 24hr concierge and residents' on-site gym and spa.

The apartment, set on the 16th floor, is finished to a high specification throughout, with designer kitchen and bathroom, solid wood flooring and high-end furnishings & appliances. The apartment features floor to ceiling windows spanning the entire length of the apartment, ensuring maximum brightness throughout the day.

### Location

You can expect excellent transport connections too since the Blackwall DLR station is located just steps away and there's also a bus stop right across the street from the building's complex and from there Canary Wharf and Canary Wharf Tube station are easily accessible in a couple of minutes.

## Overview

- 1 Bed
- Bath

Energy Efficiency Rating			
Score	Energy rating	Current	Potential
92+	A		
81-91	B		
69-80	C	72   C	72   C
55-68	D		
39-54	E		
21-38	F		
1-20	G		