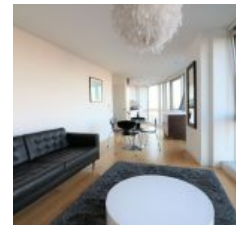
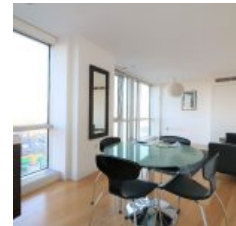


Ontario Tower, Canary Wharf, London, E14 9JD - £1,750 pcm / £404 pw



Overview

- 1 Bed
- 1 Bath

*** LUXURY 21ST FLOOR ONE BED APARTMENT - 21ST FLOOR OF ONTARIO TOWER, E14 - 24HR CONCIERGE, ON SITE SPA & GYM!***

Docklands Prestige Residential are delighted to offer a stunning One Bedroom Apartment to rent in Ontario Tower, an award-winning riverside development just a stone's throw from the centre of Canary Wharf with 24hr concierge and residents' on-site gym and spa.

The apartment, set on the 21st floor, is finished to a high specification throughout, with designer kitchen and bathroom, solid wood flooring and high-end furnishings & appliances. The apartment features floor to ceiling windows spanning the entire length of the apartment, ensuring maximum brightness throughout the day.

Residents at Ontario Tower have access to:

- * On-site Gym
- * On-site Spa; access to a Sauna, Steam Room and Relaxation area
- * Discount for any spa treatments
- * 24/7 Concierge
- * Valet parking
- * Room Service

This is a highly sought after development providing the very best in modern day living. Properties within this Tower are rare so act now!

Energy Efficiency Rating		Current	Potential
Very energy efficient - lower running costs			
(92-100)	A		
(81-91)	B	87	87
(69-80)	C		
(55-68)	D		
(39-54)	E		
(21-38)	F		
(1-20)	G		
Not energy efficient - higher running costs			
England & Wales		EU Directive 2002/91/EC	

The energy efficiency rating is a measure of the overall efficiency of a home. The higher the rating the more energy efficient the home is and the lower the fuel bills will be.