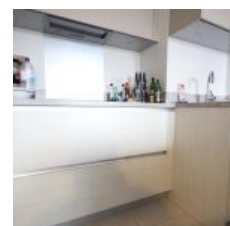
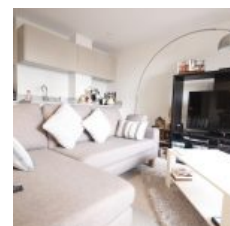


Pandora Court, 8 Robertson Road, London, E16 1FS - £1,550 pcm / £358 pw



Overview

- 1 Bed
- Bath

Docklands Prestige Residential is delighted to present a modern one-bedroom one-bathroom apartment in Pandora Court, Robertson Road, E16. The property benefits from large open plan reception and dining area, a modern fitted kitchen, a large master bedroom, a stylish bathroom are available fully furnished and with a dedicated parking space.

Location

Pandora Court is a fantastic modern development on Robertson Road, E16. The development was recently built in a quiet peaceful residential area in Canning Town. Pandora Court is located near to Canning Town Underground station and offers direct links into Central London.

Energy Efficiency Rating			
Score	Energy rating	Current	Potential
92+	A		
81-91	B	81 B	81 B
69-80	C		
55-68	D		
39-54	E		
21-38	F		
1-20	G		