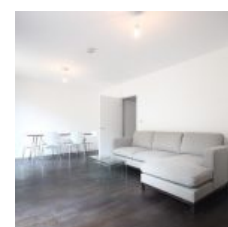
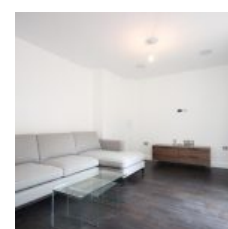
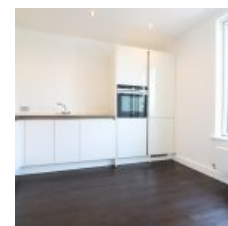


Peloton Avenue, London, E20 1HB - £3,000 pcm / £692 pw



Overview

- 3 Bed
- Bath

DPR introduces an exceptional three-bedroom, two-bathroom maisonette nestled within the highly desirable new development in Queen Elizabeth Olympic Park. This home boasts a spacious living area, a sizable private garden, and three generously sized double bedrooms, one of which boasts an en-suite bathroom. The apartment is tastefully furnished with contemporary decor, inviting residents to indulge in modern comfort. Don't miss the opportunity to schedule a viewing of this remarkable residence. Additionally, secure parking options are provided for added convenience.

Location

Located mere moments from the prestigious London Velodrome and Olympic Park, and less than 500 meters from Stratford International station, Peloton Avenue offers unparalleled convenience with access to a plethora of transportation options and amenities. Situated within a 5-minute stroll of both Stratford International and Stratford Underground Stations, this prime location provides easy access to various routes in and out of London. Furthermore, residents can enjoy the convenience of having Westfield Stratford City, one of Europe's largest urban shopping centers, right at their doorstep.

Energy Efficiency Rating			
Score	Energy rating	Current	Potential
92+	A		
81-91	B	84 B	84 B
69-80	C		
55-68	D		
39-54	E		
21-38	F		
1-20	G		