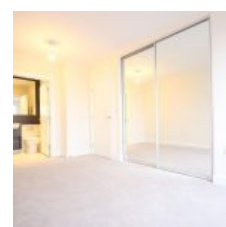
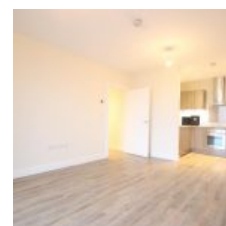
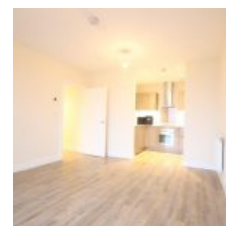


# Peninsula Quay, Pegasus Way, Gillingham, Kent, ME7 1GJ - £1,250 pcm / £288 pw



Designed and finished to exemplary standards, this two bedroom property at Victory Pier comprises a stylish two bedroom suite within Berkeley's renowned high-quality specification. Available Unfurnished.

The property comprises entrance hall with storage space, bright living room/diner with open plan kitchen, built in appliances, luxury bathroom, master and guest bedrooms.

## Location

Experience the high life! Set on the Medway waterfront, Victory Pier forms part of an exciting, multi-billion pound programme of works which has seen a total transformation of this stretch of the River Medway.

Contemporary award-winning homes, stunning landscaped surroundings and an exceptional waterside setting has drawn a flourishing community to Victory Pier, with shops, restaurants and bars set to add to the atmosphere.

## Overview

- ✘ 2 Bed
- ✘ Bath

Energy Efficiency Rating			
Score	Energy rating	Current	Potential
92+	A		
81-91	B	84   B	84   B
69-80	C		
55-68	D		
39-54	E		
21-38	F		
1-20	G		