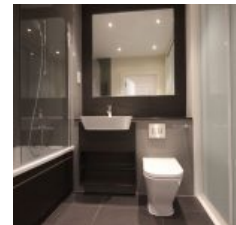
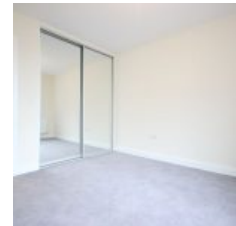
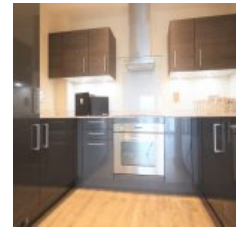


Peninsula Quay, Pegasus Way, Gillingham, ME7 1GL - £210,000



Overview

- 1 Bed
- 1 Bath

Docklands Prestige Residential are delighted to offer a brand new stunning one-bedroom apartment, situated on the 3rd floor of Peninsula Quay, ME7 for sale. The property boasts a large open plan living space between reception and kitchen and has a large balcony.

Service Charge: £1606 per year approximately

Ground Rent: £250 per year approximately

Leasehold: 995 years

The property further benefits from:

- * Double bedroom
- * Luxury finish bathroom
- * Spacious open plan living space
- * Modern fitted kitchen with all white goods
- * Close to local amenities
- * Spacious balcony
- * Right to park



Energy Efficiency Rating		Current	Potential
Very energy efficient - lower running costs			
(92-100) A			
(81-91) B		84	84
(69-80) C			
(55-68) D			
(39-54) E			
(21-38) F			
(1-20) G			
Not energy efficient - higher running costs			
England & Wales		EU Directive 2002/91/EC	

The energy efficiency rating is a measure of the overall efficiency of a home. The higher the rating the more energy efficient the home is and the lower the fuel bills will be.