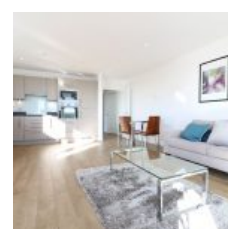
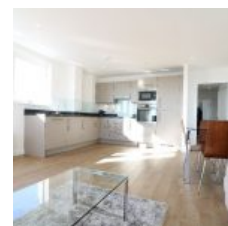


Platinum Riverside, North Greenwich, London, SE10

0GP - £550,000



Docklands Prestige Residential Stunning fully furnished two bedroom, two bathroom apartment for sale in the sought after Platinum Riverside development.

The property boasts a large open plan living space between reception and kitchen and has a private balcony. The property also benefits from allocated parking space.

Key Features:

- * 2 Double Bedrooms
- * Spacious open plan living space
- * Modern fitted kitchen with white goods
- * Built-in Wardrobe
- * Residents only gym with amazing views of the river on the 11th Floor
- * Spacious balcony
- * Concierge
- * Family bathroom, en-suite bathroom to master bedroom
- * Allocated parking space
- * River View
- * Close to Local Amenities

Ground rent: £300 approx annually

Service Charge: £2600 approx annually

Lease Hold: 245 years

North Greenwich Station (Jubilee Line, 1 stop from Canary Wharf) is within walking distance, the apartment is close to all amenities including the O2 & Emirates Cable Car

Overview

2 Bed

2 Bath



KITCHEN/ DINING AREA	6.500m x 2.200m	21'4" x 7'3"
LIVING AREA	4.250m x 3.350m	13'11" x 11'0"
MASTER BEDROOM	4.020m x 2.820m	13'2" x 9'3"
BEDROOM 2	4.200m x 2.700m	13'9" x 8'10"