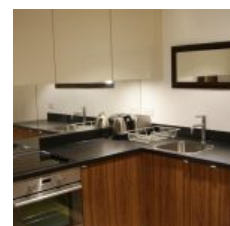
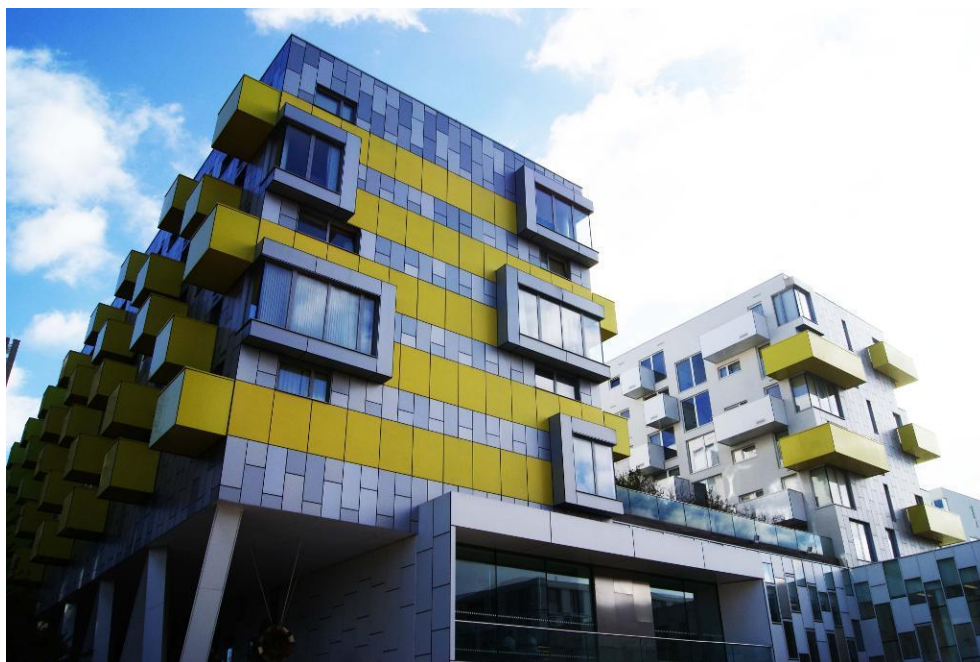


# Schrier, 1 Arboretum Place, London, IG11 7GU - £1,150 pcm / £265 pw



DPR welcomes this one-bedroom, modern apartment to the market. The flat comprises a spacious lounge open to the kitchen, one-bedroom, and bathroom. Viewings are highly recommended, please contact our lettings team for more information.

## Location

Situated perfectly for shops, restaurants and transport links, the flat is only 20 minutes away from central London.

This spacious apartment is located close to Barking Town Hall and is close to many facilities and local amenities within the contemporary surrounding. This property is situated minutes away from Barking Station which provides links into London. Local buses are also nearby providing convenient transport.

## Overview

- 1 Bed
- Bath

Energy Efficiency Rating			
Score	Energy rating	Current	Potential
92+	A		
81-91	B	83   B	86   B
69-80	C		
55-68	D		
39-54	E		
21-38	F		
1-20	G		