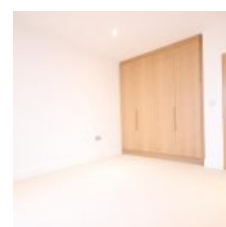
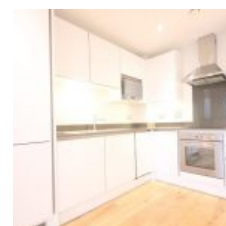
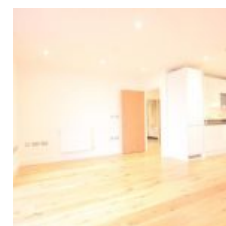


Sovereign Tower, 1 Emily Street, London, E16 1XH - £1,800 pcm / £415 pw



Overview

- 1 Bed
- Bath

Docklands Prestige Residential is pleased to present this exquisite one-bedroom apartment. The residence features a fully equipped kitchen with modern appliances, including a washer/dryer, dishwasher, fridge/freezer, stainless steel oven, ceramic hob, and microwave oven. Ample storage space and a video entry phone system add to the apartment's convenience. Residents can enjoy the landscaped communal gardens and take advantage of the onsite concierge service. Situated on the 10th floor of the Sovereign Tower within the Royal Gateway development, this one-bedroom apartment offers breathtaking views of the Royal Docks. Please note that off-street parking is not allocated with this property.

Location

Royal Gateway consists of five residential blocks: St Vincent and Prince Courts, and Centurion, Sovereign, and Thanet Towers. The upper-level apartments and penthouses in these blocks offer unparalleled, unobstructed views of the Royal Docks and London's iconic skyline, including the O2 Arena and beyond.

| Energy Efficiency Rating | | | |
|--------------------------|---------------|---------|-----------|
| Score | Energy rating | Current | Potential |
| 92+ | A | | |
| 81-91 | B | 83 B | 83 B |
| 69-80 | C | | |
| 55-68 | D | | |
| 39-54 | E | | |
| 21-38 | F | | |
| 1-20 | G | | |