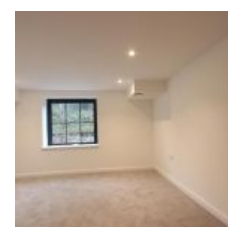
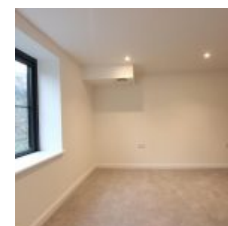


Ikon V House, St Radigunds Road, Dover, CT17 0XH - £700 pcm / £162 pw



Overview

- 1 Bed
- Bath

DPR welcomes this elegant one bedroom property to the market. Featuring a large bedroom and open and airy decor throughout.

Set in a newly refurbished building and featuring a large open plan living/dining room, this property has a lot to offer.

Location

Travel to and from Dover is easy. The high speed rail link to London St. Pancras connects Dover to the capital in just over an hour and 20 minutes. Alternatively, National Express Coaches offer a good service in and out of the town.

There is a good mix of cafés, restaurants and independent and chain shops.

Getting around the local area couldn't be more simple, with buses connecting Dover to all the surrounding towns and well sign-posted roads make driving easily negotiable.

Energy Efficiency Rating			
Score	Energy rating	Current	Potential
92+	A		
81-91	B		
69-80	C		
55-68	D	63 D	63 D
39-54	E		
21-38	F		
1-20	G		