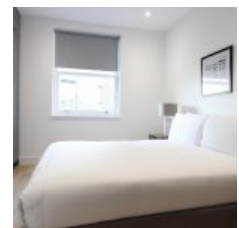
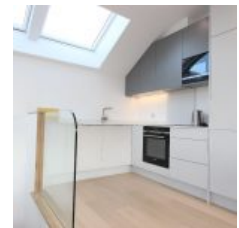


Three Colt Street, Canary Wharf, London, E14 8AP - £2,708 pcm / £625 pw



Overview

- 2 Bed
- 2 Bath

Docklands Prestige Residential are delighted to present brand new spacious two-bedroom apartment within this much sought after development situated in the prestigious riverside location of Westferry Circus and Three Colt Street.

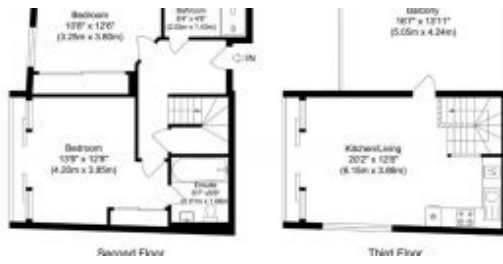
The split level property is offered professionally furnished, with great natural light throughout, offering a modern and contemporary finish, The terrace offers considerable entertaining and living spaces offering unrivalled views over the Thames.

The apartment further benefits from:

- * Boutique development
- * Contemporary solid oak flooring
- * High end living with outstanding river views
- * Separate fully integrated Siemens kitchen
- * Floor to ceiling windows offering great natural light
- * Video entry system
- * CCTV throughout
- * Wired for Sky HD
- * Underfloor heating
- * LED downlights
- * Marbled bathroom
- * Marbled shower room
- * Under storage beds
- * Fitted wardrobes
- * Bicycle stores

The development is well located for with a short walk to Canary Wharf, with the Jubilee line, DLR and Thames Clipper Service within very easy access. There is an abundance of eateries, bars and restaurants within the vicinity as well as the choice of two extensive shopping centres.

Many of the units have already been offered on - book a viewing now to avoid disappointment!



Energy Efficiency Rating		
	Current	Potential
Very energy efficient - lower running costs		
(92-100) A		
(81-91) B		
(69-80) C	79	79
(55-68) D		
(39-54) E		
(21-38) F		
(1-20) G		
Not energy efficient - higher running costs		
England & Wales	EU Directive 2002/91/EC	

The energy efficiency rating is a measure of the overall efficiency of a home. The higher the rating the more energy efficient the home is and the lower the fuel bills will be.