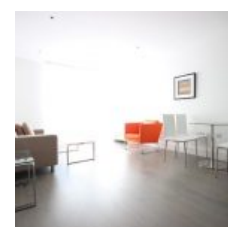
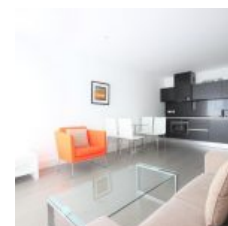


Wallace Court, 40 Tizzard Grove, Kidbrooke, London, SE3 9FD - £360,000



Overview

- 1 Bed
- Bath

This well-positioned apartment spread over (59 m²) exceptionally large ground floor one bedroom with a separate utility room, offering a bright and airy feel.

The property comprises a large open-plan living area with a modern integrated kitchen boasting high spec appliances. The living/dining area is bright and spacious. Just a short walk to Kidbrooke Station.

Location

The development located on a 136-acre site, Kidbrooke Village can be found in the Royal Borough of Greenwich, a culturally rich area of London, alive with world-famous attractions, fantastic bars, restaurants, and riverside pubs, nestled alongside an eclectic mix of independent boutiques, quirky shops, and popular crafts and antiques markets. 15 minutes direct train to London Bridge.

Lease - 992 approx.

Service charge - approx. £2943 per year approx.

Ground rent - £300 per year approx.

Energy Efficiency Rating			
Score	Energy rating	Current	Potential
92+	A		
81-91	B		
69-80	C	72 C	72 C
55-68	D		
39-54	E		
21-38	F		
1-20	G		