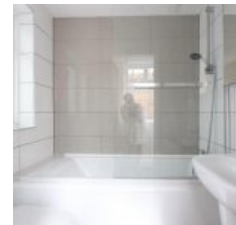
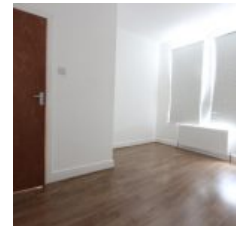


Wanstead Park Road, Ilford, London, IG1 3TG - £1,350 pcm / £312 pw



DPR is pleased to offer this newly refurbished one-bedroom ground floor flat in Ilford, available immediately, located close to local amenities & a short distance to Ilford Station. The flat is in good condition comprising of open plan living room and kitchen, one double bedroom & a tidy bathroom. Ideal for a couple or a growing family.

Overview

- 1 Bed
- Bath

Energy Efficiency Rating			
Score	Energy rating	Current	Potential
92+	A		
81-91	B		
69-80	C		
55-68	D	62 D	63 D
39-54	E		
21-38	F		
1-20	G		