



# Park View Place, Royal Docks, London, E16 2SB

for sale off-plan

## £625,000 Leasehold

Luxury Two-Bedroom Apartment, Park View Place, Royal Wharf

### Description

Large two bedroom, Two Bathroom apartment for sale located in the popular Royal Wharf development. This modern apartment is situated on the 2nd floor and measures 795 sq ft and also consists of a large terrace that measures 449 sq ft. This stunning property boasts southwest views toward the river. This property is conveniently located just a few minutes walk from Pontoon Dock DLR for easy access to Canary Wharf and the city

### Dimensions

Internal Area: 795 sq ft

Living Area: 25 x 19 sq ft

Bedroom 1: 15.5 x 9 sq ft

Bedroom 2: 12 x 10 sq ft

Balcony: 449 sq ft

Ground Rent: £500 PA

Service Charge: £3.50 sq ft PA

Leasehold: 999 years

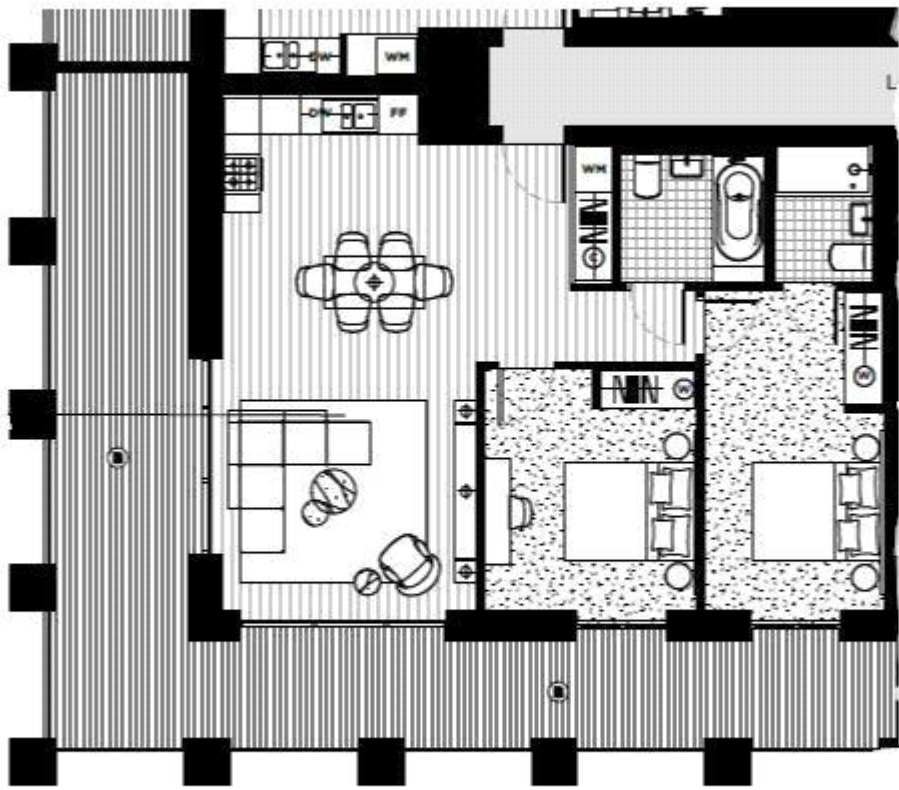
Estimated completion: Q3 2020

### Tenure

Leasehold









### Energy Efficiency Rating

	Current	Potential
<i>Very energy efficient - lower running costs</i>		
(92-100) <b>A</b>		
(81-91) <b>B</b>	<b>85</b>	
(69-80) <b>C</b>		
(55-68) <b>D</b>		
(39-54) <b>E</b>		
(21-38) <b>F</b>		
(1-20) <b>G</b>		

Viewing by appointment only  
 Docklands Prestige Residential - Head Office  
 Unit F45, Water Front Studios, 1 Dock Road, London E16 1AH  
 Tel: 020 7511 6311 Email: [info@we-are-dpr.com](mailto:info@we-are-dpr.com) Website: <http://we-are-dpr.com>