



---

# Peninsula Quay, Pegasus Way, Victory Pier, Gillingham, ME7 1GL

£210,000 Leasehold

Brand New Modern One Bedroom Apartment for sale, ME7

---

## Description

Docklands Prestige Residential are delighted to offer a brand new stunning one-bedroom apartment, situated on the 3rd floor of Peninsula Quay, ME7 for sale. The property boasts a large open plan living space between reception and kitchen and has a large balcony.

Service Charge: £1606 per year approximately

Ground Rent: £250 per year approximately

Leasehold: 995 years

The property further benefits from:

- Double bedroom
- Luxury finish bathroom
- Spacious open plan living space
- Modern fitted kitchen with all white goods
- Close to local amenities
- Spacious balcony
- Right to park

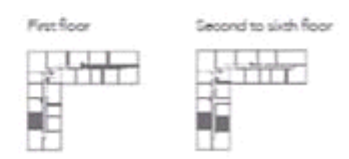
## Tenure

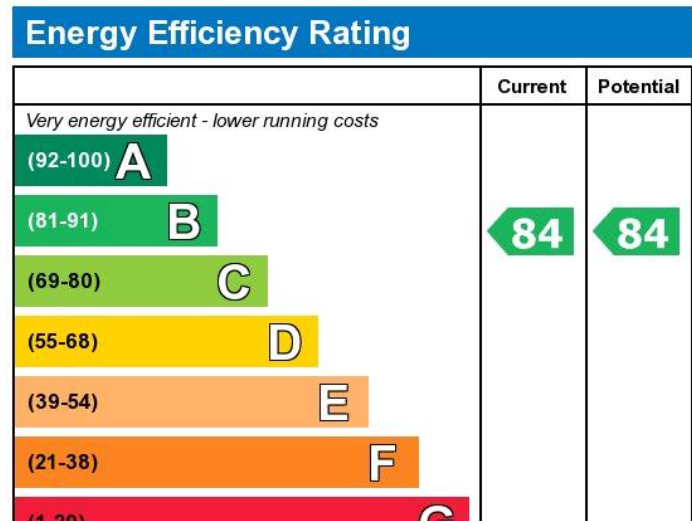
Leasehold





Kitchen/Dining/Living	6.55m x 3.60m	21'6" x 11'10"
Bedroom	3.35m x 3.10m	11'0" x 10'2"
<b>Gross Internal Area</b>	<b>45.8 sq m</b>	<b>493.20 sq ft</b>





Viewing by appointment only  
 Docklands Prestige Residential - Head Office  
 Unit F45, Water Front Studios, 1 Dock Road, London E16 1AH  
 Tel: 020 7511 6311 Email: [info@we-are-dpr.com](mailto:info@we-are-dpr.com) Website: <http://we-are-dpr.com>