



# Platinum Riverside, Bessemer Place

£550,000 Leasehold

Spacious Two Bedroom Two Bathroom Modern Apartment for sale, SE10

## Description

Docklands Prestige Residential Stunning fully furnished two bedroom, two bathroom apartment for sale in the sought after Platinum Riverside development.

The property boasts a large open plan living space between reception and kitchen and has a private balcony.

## Key Features:

- 2 Double Bedrooms
- Spacious open plan living space
- Modern fitted kitchen with white goods
- Built-in Wardrobe
- Residents only gym with amazing views of the river on the 11th Floor
- Spacious balcony
- Concierge
- Family bathroom, en-suite bathroom to master bedroom
- River View
- Close to Local Amenities

Ground rent: £300 approx annually

Service Charge: £2600 approx annually

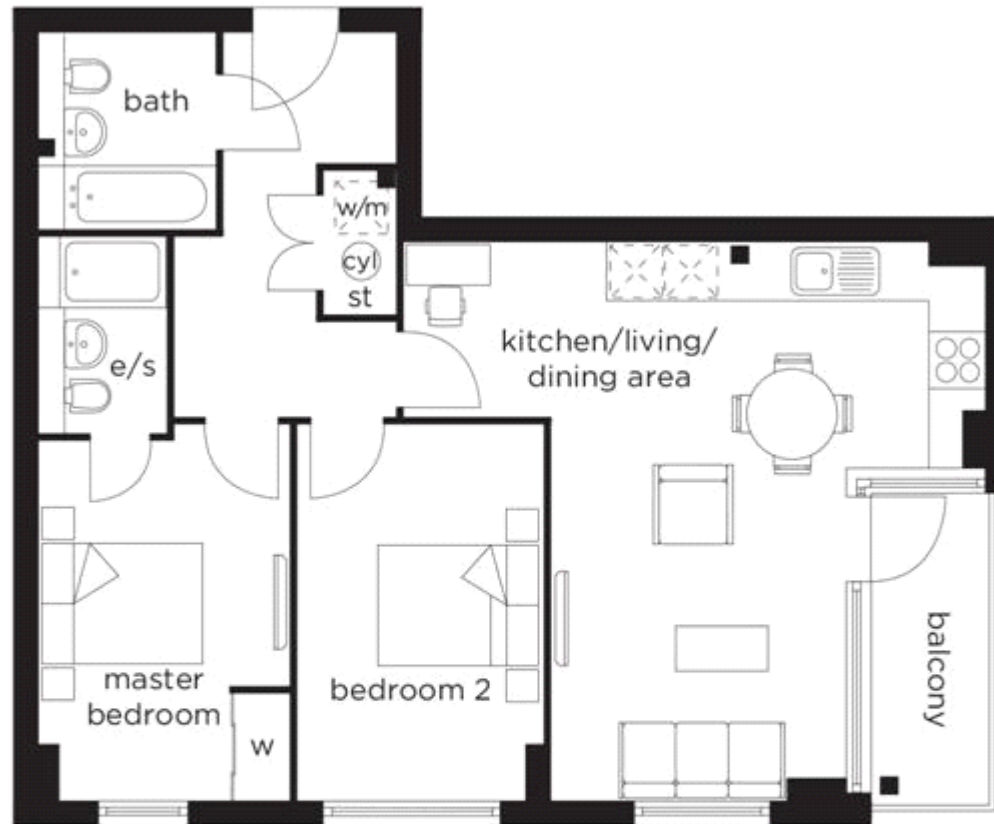
Lease Hold: 245 years



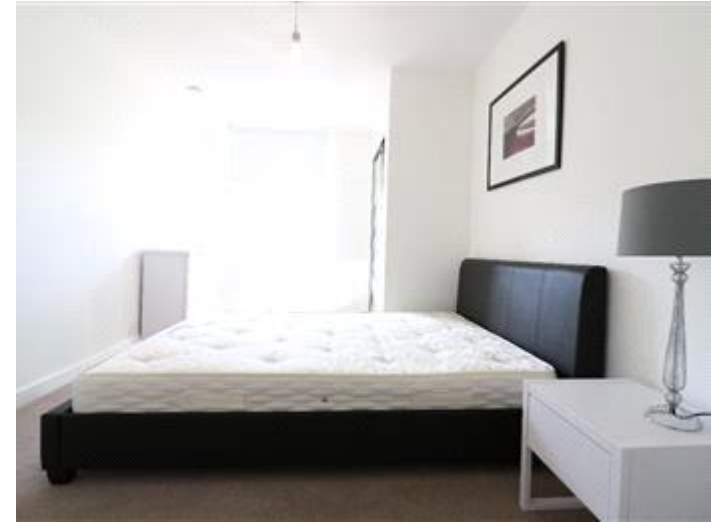
North Greenwich Station (Jubilee Line, 1 stop from Canary Wharf) is within walking distance, the apartment is close to all amenities including the O2 & Emirates Cable Car

**Tenure**

Leasehold



|                                 |                 |                |
|---------------------------------|-----------------|----------------|
| <b>KITCHEN/<br/>DINING AREA</b> | 6.500m x 2.200m | 21'4" x 7'3"   |
| <b>LIVING AREA</b>              | 4.250m x 3.350m | 13'11" x 11'0" |
| <b>MASTER BEDROOM</b>           | 4.020m x 2.820m | 13'2" x 9'3"   |
| <b>BEDROOM 2</b>                | 4.200m x 2.700m | 13'9" x 8'10"  |



Viewing by appointment only  
Docklands Prestige Residential - Head Office  
Unit F45, Water Front Studios, 1 Dock Road, London E16 1AH  
Tel: 020 7511 6311 Email: [info@we-are-dpr.com](mailto:info@we-are-dpr.com) Website: <http://we-are-dpr.com>