



Pinnacle Apartments, Croydon, London, CR0 2GF

£315,000

Brand new 1 bedroom apartment in Saffron Square, Croydon.

Description

New to the market 1 bedroom spacious apartment located in Saffron Square development.

This modern contemporary development boasting an iconic 43 storey tower situated in the heart of Croydon with excellent transport links into London and Gatwick Airport within 15 mins.

The apartment comprises 1 double bedroom, open plan kitchen/living room and family bathroom.

The apartment is on the 11th floor and west-facing and has a good size of 44 sqm / 472 sqft

- Iconic 43 storey tower
- Excellent transport links into London
- Landscaped rooftop gardens
- 24-hour concierge and residents gym

Living Room 2.95m x 5.27m 9' 8" x 17' 3"

Kitchen 2.50m x 2.25m 8' 2" x 7' 4"

Bedroom 2.80m x 4.025 9' 2" x 13' 2"

Ground Rent 1-bed £250 pa

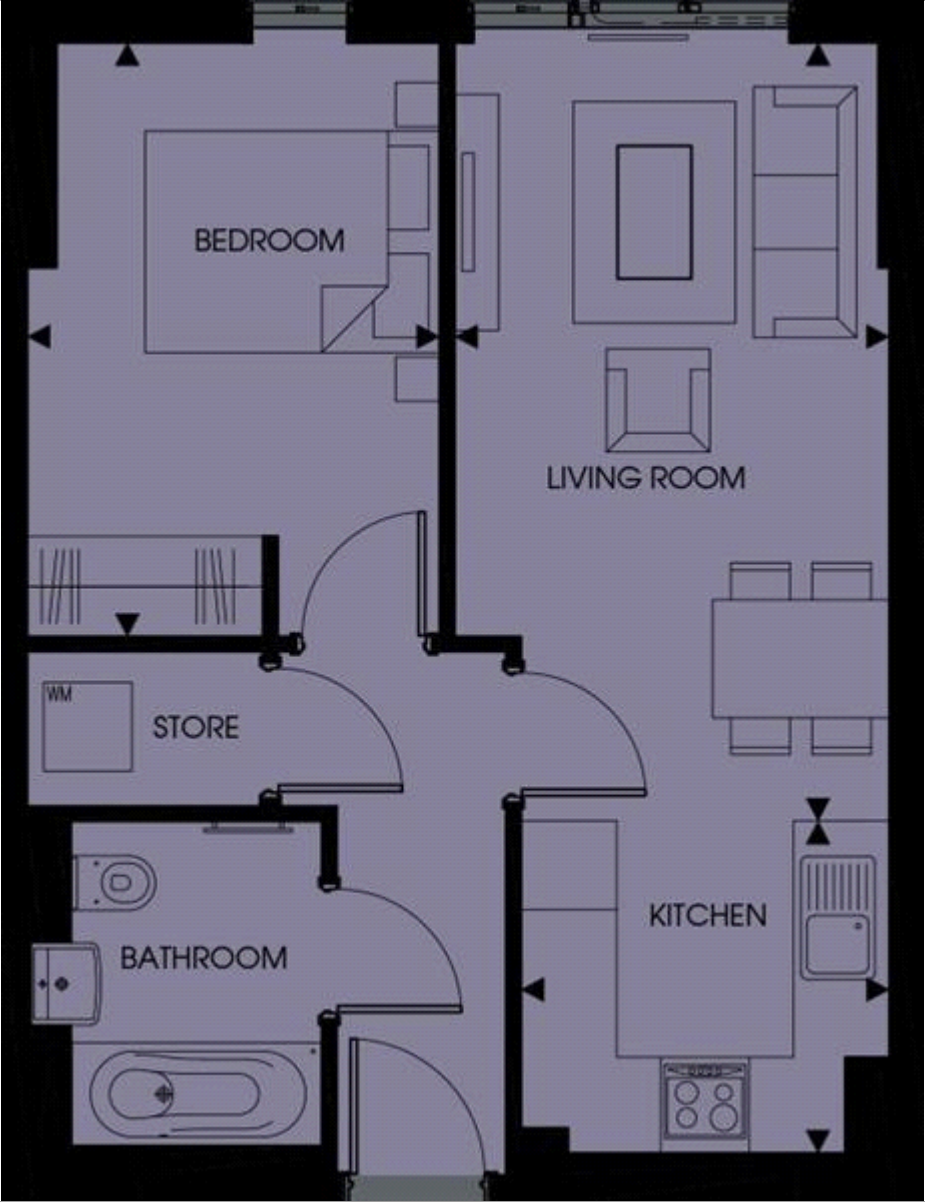
Service charge at The Tower is £4.10 per sq ft

Lease Term 999 years from 1 January 2012



Please note that pictures are from the brochure and are not presenting the exact apartment.
For viewings please contact our team.

Tenure





Energy Efficiency Rating		
	Current	Potential
<i>Very energy efficient - lower running costs</i>		
(92-100) A		
(81-91) B	85	85
(69-80) C		
(55-68) D		
(39-54) E		
(21-38) F		
(1-20) G		

Viewing by appointment only
 Docklands Prestige Residential - Head Office
 Unit F45, Water Front Studios, 1 Dock Road, London E16 1AH
 Tel: 020 7511 6311 Email: info@we-are-dpr.com Website: <http://we-are-dpr.com>