



---

# Platinum Riverside, Bessemer Place, London, SE10 0GP

sale, SE10

£550,000 Leasehold

Spacious Two Bedroom Two Bathroom Modern Apartment for

---

## Description

Docklands Prestige Residential Stunning fully furnished two bedroom, two bathroom apartment for sale in the sought after Platinum Riverside development.

The property boasts a large open plan living space between reception and kitchen and has a private balcony.

### Key Features:

- 2 Double Bedrooms
- Spacious open plan living space
- Modern fitted kitchen with white goods
- Built-in Wardrobe
- Residents only gym with amazing views of the river on the 11th Floor
- Spacious balcony
- Concierge
- Family bathroom, en-suite bathroom to master bedroom
- River View
- Close to Local Amenities

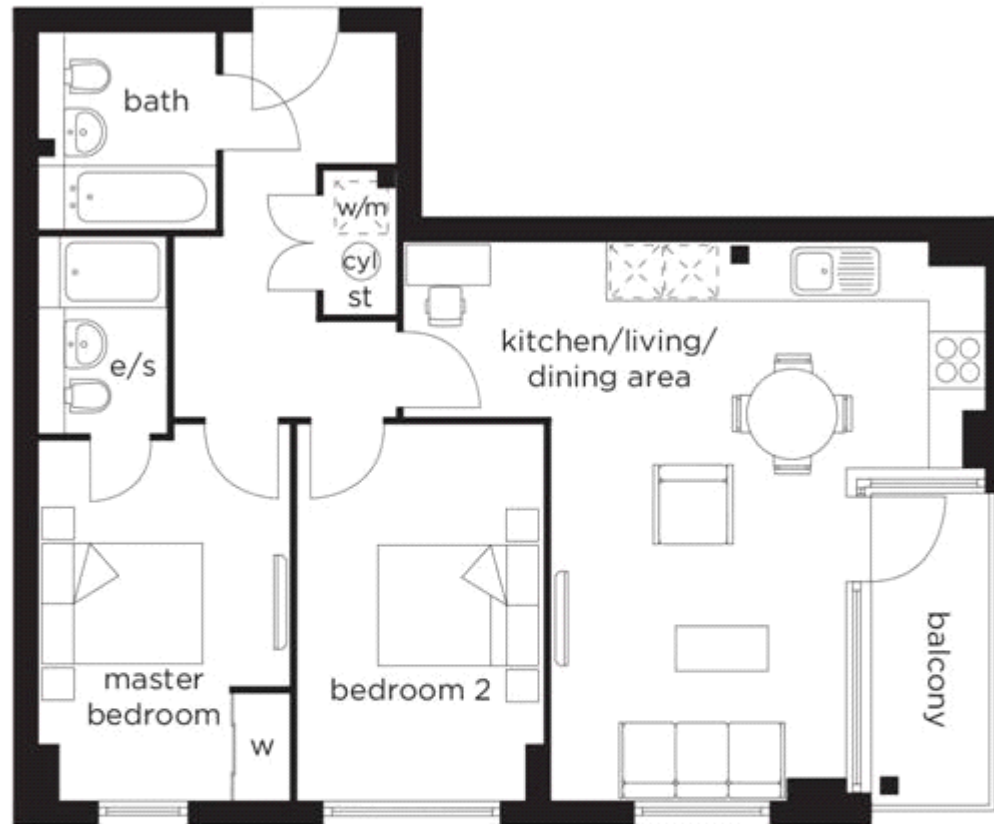
Ground rent: £300 approx annually  
Service Charge: £2600 approx annually  
Lease Hold: 245 years



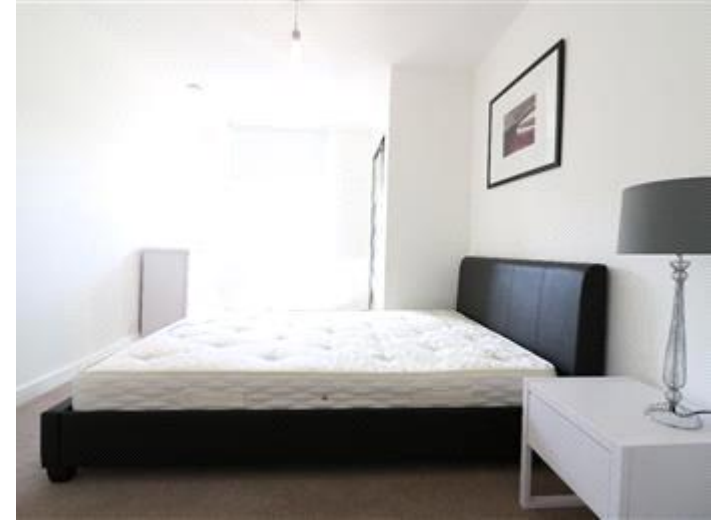
North Greenwich Station (Jubilee Line, 1 stop from Canary Wharf) is within walking distance, the apartment is close to all amenities including the O2 & Emirates Cable Car

**Tenure**

Leasehold



<b>KITCHEN/ DINING AREA</b>	6.500m x 2.200m	21'4" x 7'3"
<b>LIVING AREA</b>	4.250m x 3.350m	13'11" x 11'0"
<b>MASTER BEDROOM</b>	4.020m x 2.820m	13'2" x 9'3"
<b>BEDROOM 2</b>	4.200m x 2.700m	13'9" x 8'10"



Viewing by appointment only  
Docklands Prestige Residential - Head Office  
Unit F45, Water Front Studios, 1 Dock Road, London E16 1AH  
Tel: 020 7511 6311 Email: [info@we-are-dpr.com](mailto:info@we-are-dpr.com) Website: <http://we-are-dpr.com>