



Platinum Riverside, North Greenwich, London, SE10 0GP

sale, SE10

£550,000 Leasehold

Spacious Two Bedroom Two Bathroom Modern Apartment for

Description

Docklands Prestige Residential Stunning fully furnished two bedroom, two bathroom apartment for sale in the sought after Platinum Riverside development.

The property boasts a large open plan living space between reception and kitchen and has a private balcony. The property also benefits from allocated parking space.

Key Features:

- 2 Double Bedrooms
- Spacious open plan living space
- Modern fitted kitchen with white goods
- Built-in Wardrobe
- Residents only gym with amazing views of the river on the 11th Floor
- Spacious balcony
- Concierge
- Family bathroom, en-suite bathroom to master bedroom
- Allocated parking space
- River View
- Close to Local Amenities

Ground rent: £300 approx annually



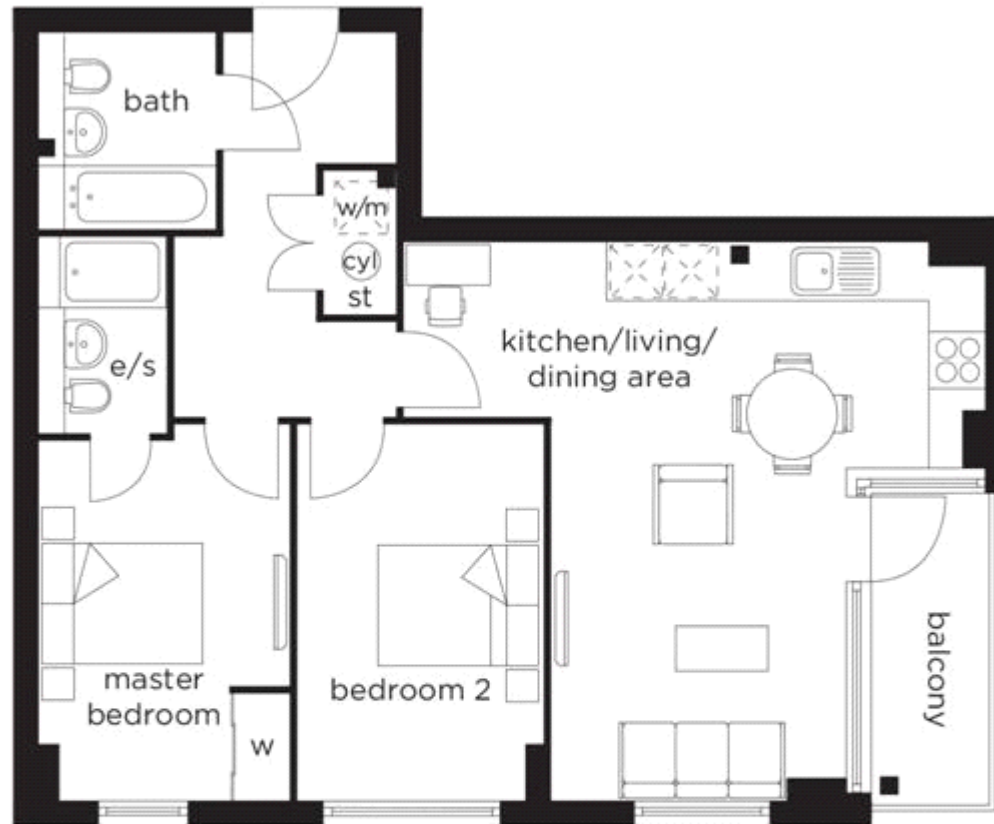
Service Charge: £2600 approx annually

Lease Hold: 245 years

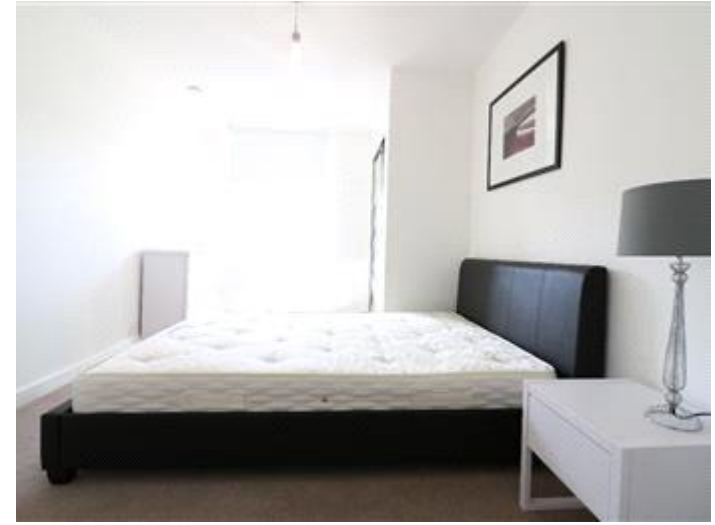
North Greenwich Station (Jubilee Line, 1 stop from Canary Wharf) is within walking distance, the apartment is close to all amenities including the O2 & Emirates Cable Car

Tenure

Leasehold



KITCHEN/ DINING AREA	6.500m x 2.200m	21'4" x 7'3"
LIVING AREA	4.250m x 3.350m	13'11" x 11'0"
MASTER BEDROOM	4.020m x 2.820m	13'2" x 9'3"
BEDROOM 2	4.200m x 2.700m	13'9" x 8'10"



Viewing by appointment only
Docklands Prestige Residential - Head Office
Unit F45, Water Front Studios, 1 Dock Road, London E16 1AH
Tel: 020 7511 6311 Email: info@we-are-dpr.com Website: <http://we-are-dpr.com>