



Farnsworth Court, Greenwich, London, SE10 0RG

available for sale, Greenwich Millennium Village, SE10

£450,000 Leasehold

Immaculate Two Bedroom Two Bathroom Apartment with parking

Description

Docklands Prestige Residential are delighted to present an immaculate two bedroom two bathroom apartment in Farnsworth House, part of Greenwich Millennium Village development, SE10.

The apartment benefits from two double bedrooms, two bathrooms - ensuite to master, open plan kitchen/ reception and a private balcony. The apartment is exclusive as there are only 3 per floor in the development. The property has floor to ceiling windows offering maximum light throughout.

Farnsworth Court benefits from 24 Hour Concierge, lift and secure entry system. Access to North Greenwich Underground (Jubilee Line) is within 0.6miles and serves Canary Wharf in less than 5 minutes. The amenities, shops and restaurants of the O2 Centre is also superbly accessible being just over half a mile away.

Lease remaining - 984 years

Service Charge - £3500 - £4000 per annum

Ground Rent - £250 per annum

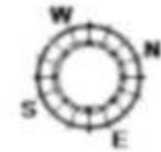
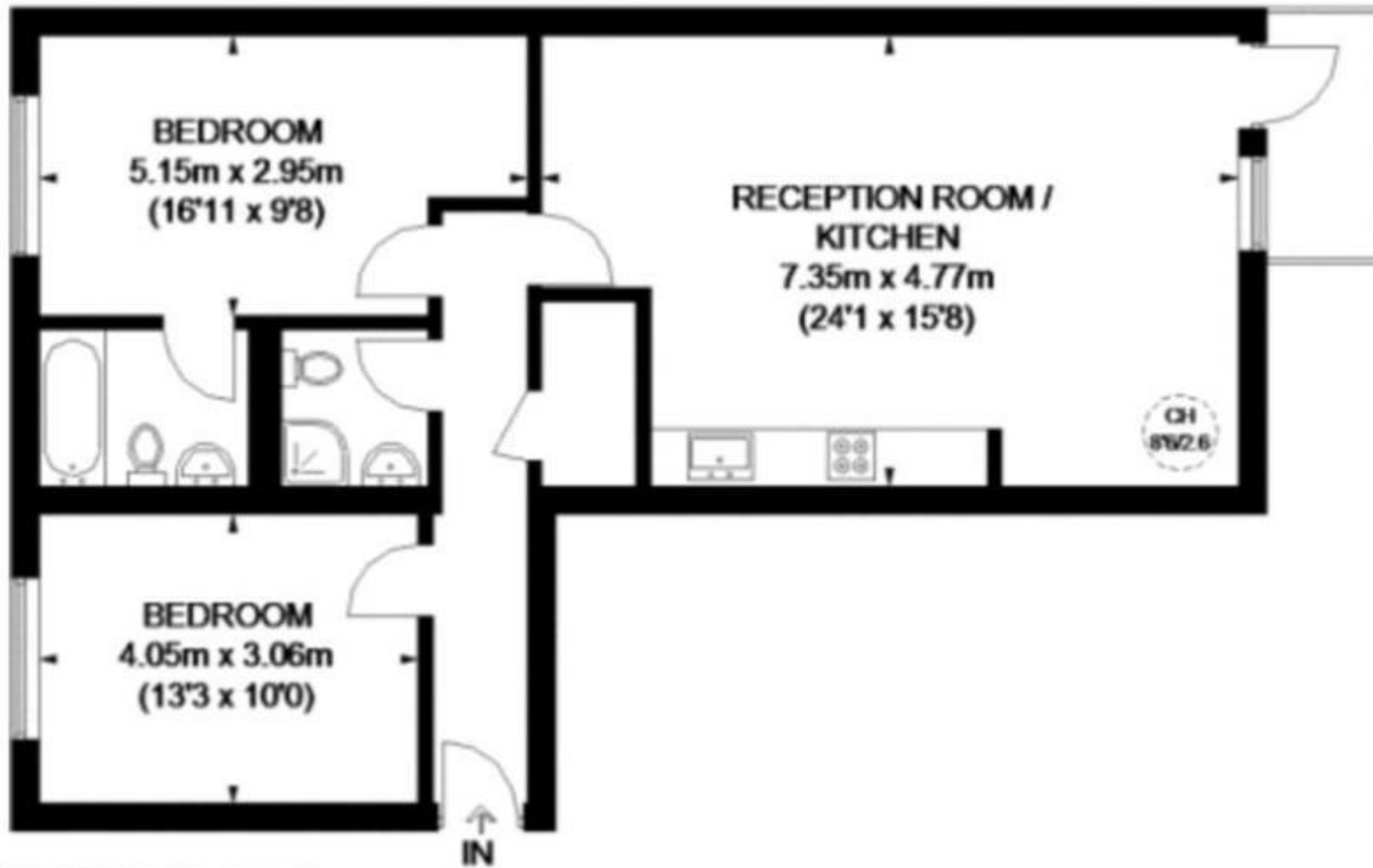
Book a viewing now to avoid disappointment!

Tenure

Leasehold



FARNSWORTH COURT



APPROXIMATE GROSS INTERNAL AREA
835 SQ. FT. (77.6 SQ. M.)

THIRD FLOOR



Energy Efficiency Rating		
	Current	Potential
Very energy efficient - lower running costs		
(92-100) A		
(81-91) B	84	84
(69-80) C		
(55-68) D		
(39-54) E		
(21-38) F		
(1-20) G		

Viewing by appointment only
 Docklands Prestige Residential - Head Office
 Unit F45, Water Front Studios, 1 Dock Road, London E16 1AH
 Tel: 020 7511 6311 Email: info@we-are-dpr.com Website: <http://we-are-dpr.com>