



Wallace Court, Kidbrooke Village, London, SE3 9FD

£360,000 Leasehold

1 bedroom apartment in Kidbrooke Village

Description

This well positioned apartment spread over (59 m²) exceptionally large ground floor one bedroom with a separate utility room, offering a bright and airy feel.

The property comprises of a large open plan living area with a modern integrated Kitchen boasting high spec appliances. The living/dining area is bright and spacious. Just a short walk to Kidbrooke Station.

The development has amenities such as cinema room & 24 hour concierge along with a RIGHT to park space.

The development located on 136 acre site, Kidbrooke Village can be found in the Royal Borough of Greenwich, a culturally rich area of London, alive with world famous attractions, fantastic bars, restaurants and riverside pubs, nestled alongside an eclectic mix of independent boutiques, quirky shops and popular crafts and antiques markets. 15 minutes direct train to London Bridge and a premium SE3 post code!

Service charge - approx. £2943 per annum

Ground rent - £300 per annum

Tenure

Leasehold

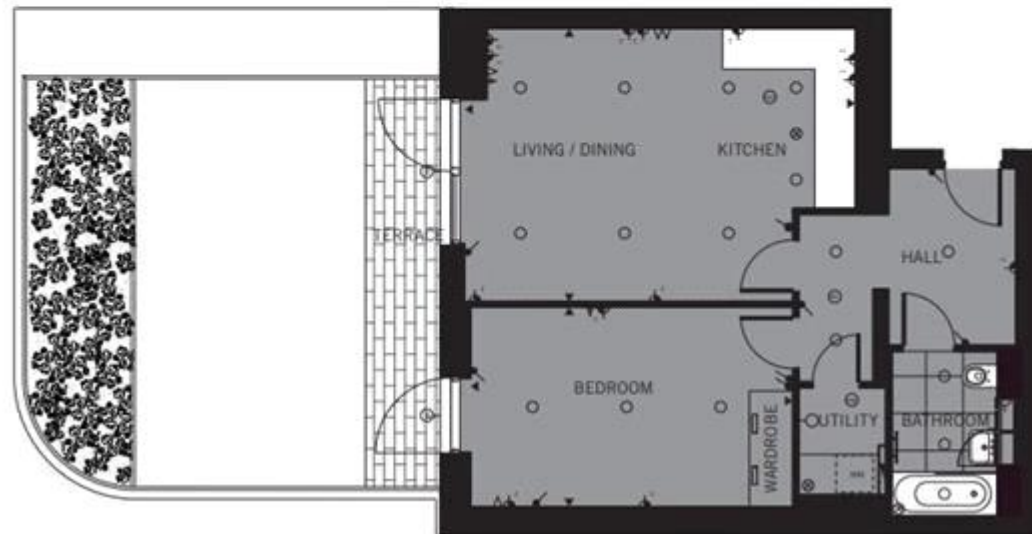


The Wallace Apartments

One Bedroom

Ground floor

Total Area:	63.12 SQ M	679 SQ FT
Living/Dining/Kitchen:	6305mm x 4395mm	20' 8" x 14' 5"
Bedroom:	5200mm x 3215mm	17' 0" x 10' 6"





Energy Efficiency Rating		
	Current	Potential
Very energy efficient - lower running costs		
(92-100) A		
(81-91) B		
(69-80) C	72	
(55-68) D		
(39-54) E		
(21-38) F		
(1-20) G		

Viewing by appointment only
 Docklands Prestige Residential - Head Office
 Unit F45, Water Front Studios, 1 Dock Road, London E16 1AH
 Tel: 020 7511 6311 Email: info@we-are-dpr.com Website: <http://we-are-dpr.com>