



# Peninsula Quay, Pegasus Way, Victory Pier, Gillingham ME7 1GL

£200,000 Leasehold

Modern One Bedroom Apartment available for sale, ME7

## Description

Docklands Prestige Residential are delighted to offer a modern One Bedroom apartment, situated within Peninsula Quay, part of the Victory Pier development in Gillingham.

The property benefits from:

- Double Bedroom
- Luxury finish bathroom
- Spacious open plan living space
- Modern fitted kitchen with all white goods
- Close to local amenities
- Balcony
- Gym
- Wifi Lounge
- Less than 45 minute commute to central London

Service Charge: £1,700 per annum

Ground Rent: £250 per annum

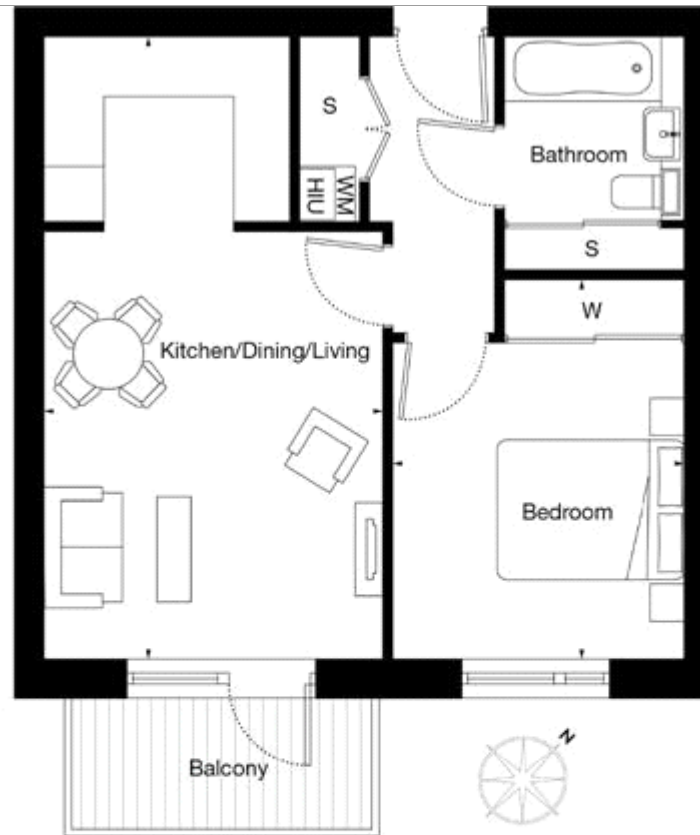
999 Year Lease

\*\*Attractive yield for investors\*\*

## Tenure

Leasehold





  
 Landscaped podium &  
 central green view

Kitchen/Dining/Living	4.45m x 3.55m	14'8" x 11'8"
Bedroom	3.50m x 3.10m	11'6" x 10'2"
<b>Gross Internal Area</b>	<b>46.7 sq m</b>	<b>502.78 sq ft</b>



Energy Efficiency Rating		
	Current	Potential
Very energy efficient - lower running costs		
(92-100) <b>A</b>		
(81-91) <b>B</b>	<b>83</b>	<b>83</b>
(69-80) <b>C</b>		
(55-68) <b>D</b>		
(39-54) <b>E</b>		
(21-38) <b>F</b>		
(1-20) <b>G</b>		

Viewing by appointment only  
 Docklands Prestige Residential - Head Office  
 Unit F45, Water Front Studios, 1 Dock Road, London E16 1AH  
 Tel: 020 7511 6311 Email: [info@we-are-dpr.com](mailto:info@we-are-dpr.com) Website: <http://we-are-dpr.com>